



# 3-Port HDMI 2.0 Switch with Alexa User's Guide



P/N: Switch3P-HD20

Thank you for purchasing from gofanco. Our products aim to meet all your connectivity needs wherever you go. For optimum performance and safety, please read the instructions carefully and keep this User's Guide for future reference. If you need more information about our products, please visit [www.gofanco.com](http://www.gofanco.com). For technical support, please email us at [support@gofanco.com](mailto:support@gofanco.com). For drivers/manuals download, please go to [www.gofanco.com/downloads](http://www.gofanco.com/downloads).

## **Important Safety Notices**

Please read safety instructions carefully before installation and operation.

- Please pay close attention to all warnings and hints for this device
- Do not expose this unit to rain, heavy moisture, or liquid
- Do not repair the device or open the enclosure without professional guidance to avoid electric shocks. Doing so may void your warranty
- Keep the product in a well-ventilated location to avoid damage from overheating

- Shut off power and make sure environment is safe before installation
- Do not plug the HDMI cables in/out when the device is in use to avoid cable damage. Make sure they are plugged into the correct ports
- Use the included DC5V power adapter only. Make sure the specification matches if using 3rd-party DC power adapters

## **Introduction**

The 3-Port HDMI 2.0 Switch with Alexa allows 3 HDMI sources to be switched to 1 display without signal degradation.

## **Features**

- HDMI 2.0 and HDCP 2.2 compliant
- Supports up to 4K@60Hz YUV 4:4:4, HDR10, Dolby Vision, and 18Gbps bandwidth
- Supports LPCM and digital 7.1 channel audio, including DTS and Dolby Digital
- Switching methods: Switch button, IR remote, App, Alexa voice control
- Supports CEC and smart Auto switching

## **Package Contents**

- 3-Port HDMI 2.0 Switch with Alexa
- Remote control
- Power adapter
- User's guide

## **Installation Requirements**

1. HDMI source devices (computer, DVD player, XBOX, PS3, etc)
2. HDMI display device (SDTV/Monitor, HDTV/Monitor, projector, etc.)
3. HDMI cables

## Layout

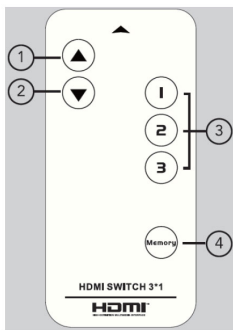


Figure 1: Remote Control

1. Press to select the previous source device
2. Press to select the next source device
3. Press 1/2/3 selects the source device directly
4. Press to add the active input source into memory. The input source added to memory will be automatically selected whenever the switch restarts

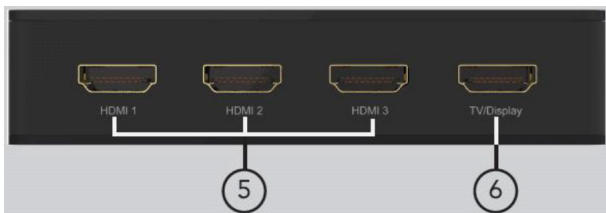


Figure 2: Back Panel

5. HDMI Inputs 1-3: Connect your HDMI source devices here
6. HDMI Output: Connect your HDMI display here



Figure 3: Side Panel

7. Power Jack: Connect the included 5V/1A power adapter here

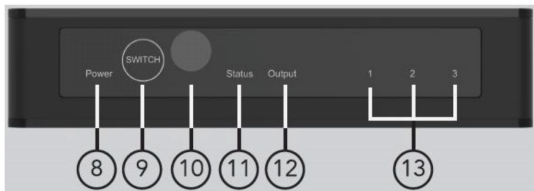


Figure 4: Front Panel

8. Power LED: On when the switcher is powered on
9. Switch: Quick press to switch between input devices. Long press to reset the WiFi signal
10. IR Receiver window: Receives IR signal from the included remote control
11. WiFi Status LED:
  - Quick Flash: No WiFi signal detected
  - Slow Flash: WiFi signal pairing
  - Off: WiFi signal detected and paired
12. HDMI Output LED:
  - On: Display is detected
  - Off: Display not detected
13. Input LED Indicator (1/2/3):
  - Red: Source device selected, but no signal detected
  - Blue: The source device signal is active
  - Off: Source device not selected

## Hardware Installation

1. Power off all devices including your HDMI source(s) and HDMI display.
2. Connect your HDMI source devices to the Switch's HDMI Input connectors with HDMI cables (HDMI cables not included).
3. Connect your HDMI display to the Switch's HDMI output connector with an HDMI cable (HDMI cable not included).
4. Plug the included power adapter into the Switch's Power Jack, then plug the power adapter into a reliable power source.
5. Power on all connected devices.
6. The Switch is ready for use.



# Connection Diagram



# App Control

1. Scan the QR code to download the Magic Home app from Google Play or Apple Store and install it.

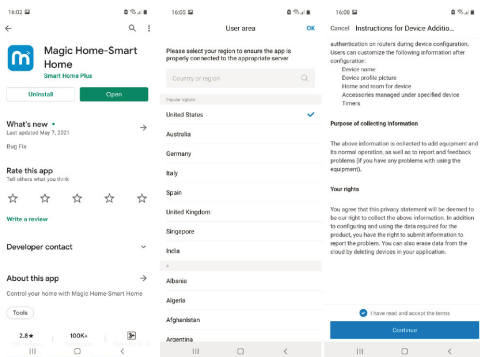


QR code for Android Download

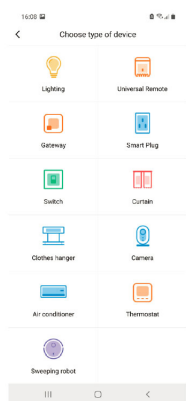
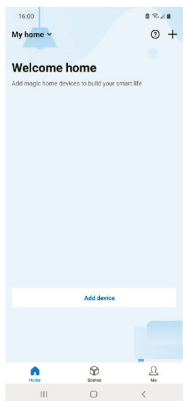


QR code for iOS Download

2. Open the Magic Home app, sign up for an account with your phone or email, then sign into the app. Select United States as the login area.

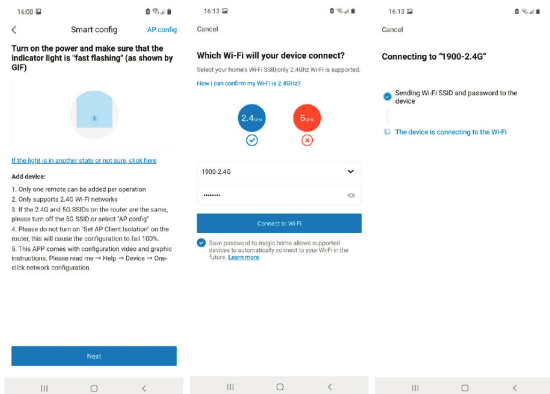


3. After entering the app, click Home icon located on the lower left of the screen and select Add Device, then select the Universal Remote icon.



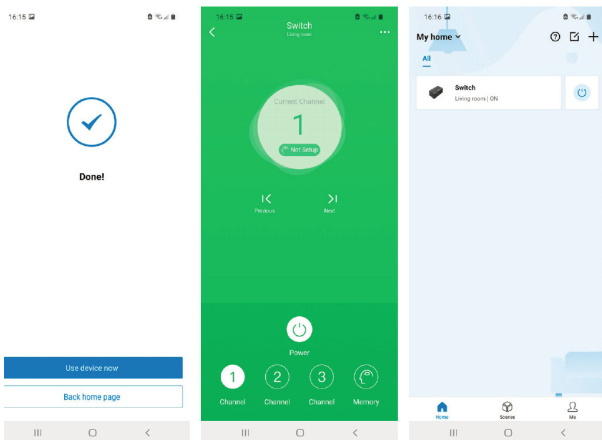
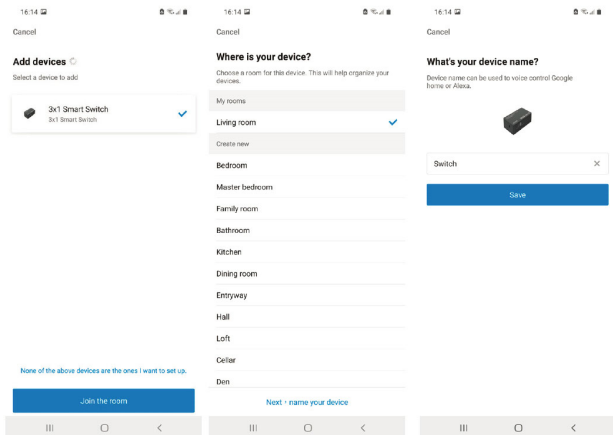
4. Hold down the Switch's Switch select button for 10 seconds to reset the WiFi module. Release the button when the WiFi Status LED starts to flicker quickly.
5. Click the operation confirmed option and then click Next.

6. Select the WiFi to connect to, only 2.4GHz band is supported, guest mode is not recommended to avoid matching issues with between phone or other devices when using the app. Enter you password and click Next to continue.



7. The WiFi status LED will flicker fast to slow and finally Off when pairing is complete. Click the smart switcher icon from the Home page to enter the control UI.

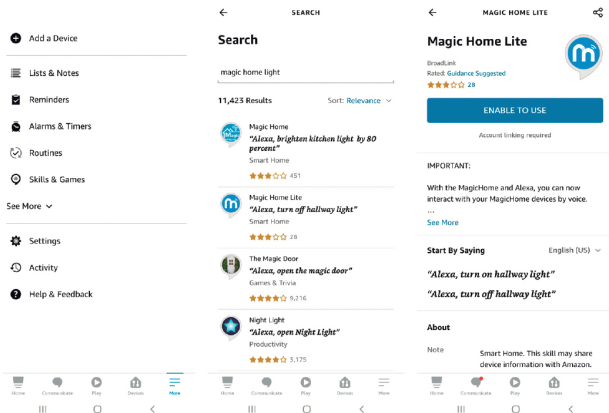
## 8. Add the switcher to a room.



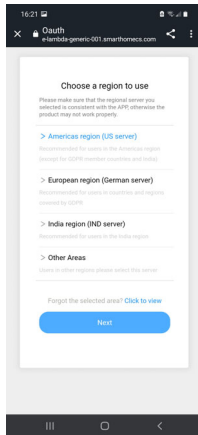
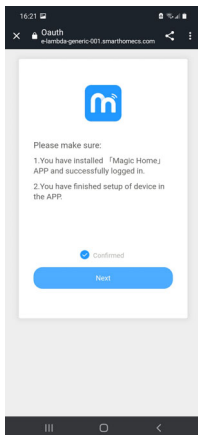
# Amazon Alexa Control

Go to <https://alexa.amazon.com> and log into your Amazon Alexa account or create your Amazon Alexa account before continuing with the setup. **Note:** An Amazon Alexa device is required.

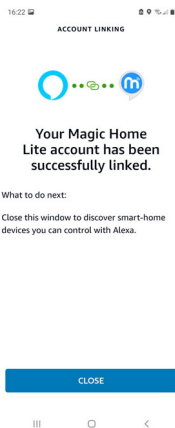
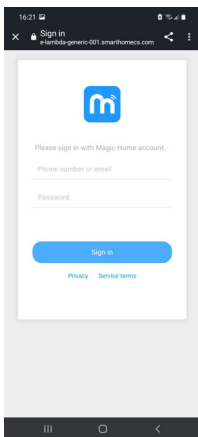
1. Activate and link the Magic Home Lite app.
2. At the Amazon Alexa page, select Skills option and enter Magic Home Lite, then click Search.



3. Confirm #1 and #2, click Confirmed, and click Next.
4. Select American region as default, regardless of which country you're in, and click Next.



5. Sign into your Magic Home account. The Magic Home app has been successfully linked and you can use Alexa voice control to switch source devices.





# Alexa Voice Command List

Function	Voice command
Turn on function	Alexa, Turn the *****(For example: smart switcher) Alexa, Turn on the **** Alexa, Switch on the ****
Turn off function	Alexa, Off the ****(For example: smart switcher) Alexa, Turn off the **** Alexa, Switch off the **** Alexa, Shut down the **** Alexa, Shut the ****
switch to input channel	Alexa, Change the **** to HDMI N(N=1,2,3) Alexa, Jump the **** to HDMI N Alexa, Switch the **** to HDMI N Alexa, Change the **** input to HDMI N Alexa, Jump the **** input to HDMI N Alexa, Switch the **** input to HDMI N

\*\*\*\* is the name that you type in when setting Magic Home app

## **FAQ & Solutions**

**Q:** There is no video output or audio and video display is not normal.

**A:** 1) Check the power adapter connection and make sure the Switch's Power LED is on.

2) Check whether the HDMI cables are connected properly.

3) Check the TV is set to the correct HDMI input.

**Q:** The display is unstable or pixilated.

**A:** 1) Check whether the HDMI cables are connected properly.

2) Connect the HDMI source directly to the TV for proper connection.

3) Try different HDMI cables.

# Specifications

Input Ports	HDMI x 3
Output Ports	HDMI x 1
Vertical Frequency Range	50/60Hz
Video Amplifier Bandwidth	6.0Gbps/600MHz per channel(18Gbps all channels)
Interlaced(50&60Hz)	480i,576i,1080i
Progressive(50&60Hz)	480p,576p,720p,1080p,4K@24/30Hz,4k@50/60Hz
Limited Warranty	1 Year Parts and Labor
Operating Temperature	0°C to 70°C
Storage Humidity	5% to 90% RH non-condensation
Power Supply	5V DC
Power Consumption (Max)	5W
Splitter Unit Cert	FCC, CE, RoHS
Power Supply Cert	FCC, CE, RoHS
Power Adapter Standard	US, EU, UK, AU Standard etc.
Dimension(LxWxH)	118x65x26mm
Net Weight	113g
Material	ABS + Aluminum Alloy Frame
User Manual	English Version

Note: Specifications are subject to change without notice.

## **Disclaimer**

The product name and brand name may be registered trademarks of related manufacturers. TM and ® may be omitted on the user's guide. The pictures on the user's guide are just for reference, and there may be some slight differences with the actual products.

We reserve the right to make changes without prior notice to a product or system described herein to improve reliability, function, or design.



Thank you for choosing gofanco