



# 1080p 4x1 HDMI Multi-Viewer User's Guide



P/N: QuadView

Thank you for purchasing from gofanco. Our products aim to meet all your connectivity needs wherever you go. For optimum performance and safety, please read the instructions carefully and keep this User's Guide for future reference. If you need more information about our products, please visit [www.gofanco.com](http://www.gofanco.com). For technical support, email us at [support@gofanco.com](mailto:support@gofanco.com). For drivers or manual download, please go to [www.gofanco.com/downloads](http://www.gofanco.com/downloads).

## **Important Safety Notices**

Please read safety instructions carefully before installation and operation.

- Please pay close attention to all warnings and hints for this device
- Do not expose this unit to rain, heavy moisture, or liquid
- Do not put any items into the device or attempt to modify its operation
- Do not repair the device or open the enclosure without professional guidance to avoid electric shocks. Doing so may void your warranty
- Keep the product in a well-ventilated location to avoid damage from overheating
- Shut off power and make sure environment is safe before installation
- Do not plug the HDMI cables in/out when the device is in use to avoid cable damage. Make sure they are plugged into the correct ports

## **Introduction**

The 1080p 4x1 HDMI Multi-Viewer allows you to view four HDMI source devices on a single HDMI display.

## **Features**

- Simultaneously view four video sources on a display
- Supports Quad, Dual, and Full Screen modes
- Supports up to 1080p @60Hz resolution and PCM 2-channel audio
- Control methods: Remote control and front panel button
- Durable surface mountable enclosure
- Simple Plug & Play installation

## **Package Contents**

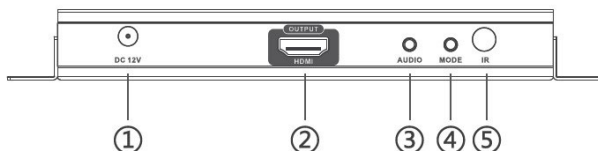
- 1080p 4x1 HDMI Multi-Viewer
- Power adapter (12V/2A)
- Remote control
- Surface mounting accessories
- User guide

## **Installation Requirements**

1. HDMI source devices (DVD player, set top box, PC, etc.)
2. HDMI display device (SDTV/Monitor, HDTV/Monitor, projector, etc.)

## Product Layout

### Front Panel:



### Back Panel:

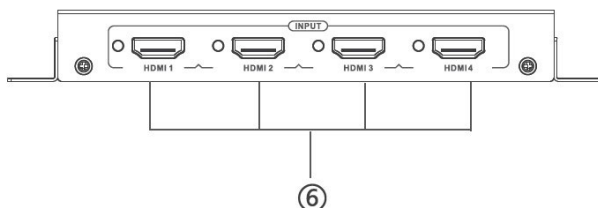


Figure 1: 4K Multi-Viewer Layout

1. Power Jack: Connect to the included power adapter
2. HDMI Out: Connect to your HDMI display using an HDMI cable (HDMI cable not included)
3. Audio Button: Press to select the audio mode in order: Input 1, Input 2, Input 3, Input 4, Mute
4. Mode Button: Press to select the video output mode. See Video Mode Button page 6 for more information
5. IR Window: Receives IR signals from the included remote control
6. HDMI Inputs (1-4): Connect to your HDMI sources using HDMI cables (HDMI cables not included)

## Hardware Installation

1. Power off all devices including your HDMI source(s) and HDMI display.
2. Connect your HDMI source device(s) to the HDMI In connectors with HDMI cables (HDMI cables not included).
3. Connect your HDMI display to the HDMI Out connector with an HDMI cable (HDMI cable not included).
4. Plug the included power adapter into the Multi-Viewer's power jack, then plug the power adapter into a reliable power outlet.
5. Power on all devices.
6. The Multi-Viewer is ready for use.

## Connection Diagram

The diagram shows the typical devices used with the Multi-Viewer.

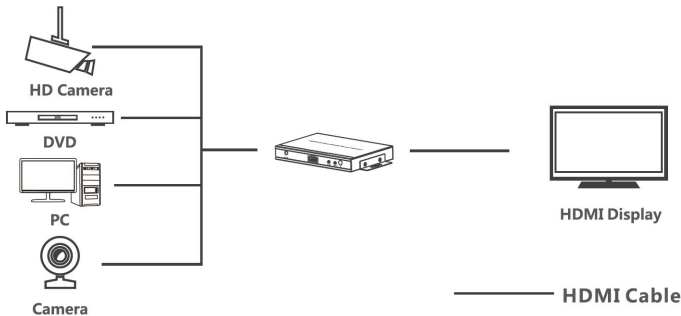


Figure 2: Connection Diagram

## **Device Control**

### Video Mode Button

There are three main modes: Quad, Dual, Single/Full Screen. Within each mode there are sub-modes to which you can choose screen positions. Use the mode button, located on the front panel, to select the video sub-mode.

### Video Sub-Mode Selection Order

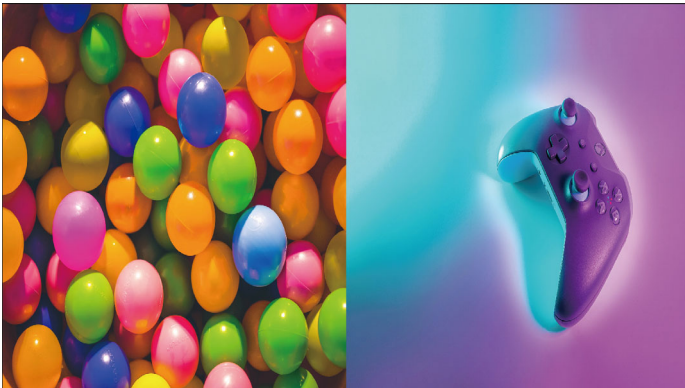
1. H Quadview: Input 1, Input 3&4, Input 2
2. 1x3 Quadview (1 lg x 3 sm): Input 1 & Input 2, 3, 4
3. 1x3 Quadview (1 lg x 3 sm): Input 2 & Input 1, 3, 4
4. 1x3 Quadview (1 lg & 3 sm): Input 3 & Input 1, 2, 4
5. 1x3 Quadview (1 lg & 3 sm): Input 4 & Input 1, 2, 3
6. Side by Side Dualview: Input 1 & Input 2
7. Side by Side Dualview: Input 3 & Input 4
8. Single Screen: Input 1
9. Single Sreen: Input 2
10. Single Screen: Input 3
11. Single Screen: Input 4
12. 2x2 Quadview: Input 1, Input 2 & Input 3, Input 4

## Video Sub-Modes

### Single Screen



### Side by Side Dualview



## H Quadview



## 2x2 Quadview





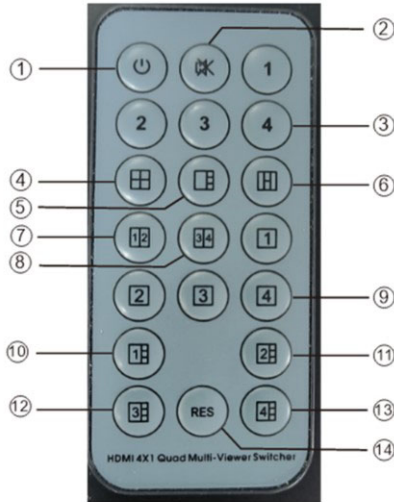
## 1x3 Quadview



### Audio Selection Button

Use the Audio button, located on the front panel, to select the audio mode in order: Input 1, Input 2, Input 3, Input 4, Mute.

## Remote Control



1. Power: Press to turn On/Off the multi-viewer
2. Mute: Press to mute the audio
3. Audio (1-4): Press to select audio mode - Input 1, Input 2, Input 3, Input 4
4. 2x2: Press to select 2x2 split screen
5. 1x3: Press to select 1 large & 3 small split screen
6. H Quadview: Press to select 4 screens in H pattern - Input 1 & Input 2 (outside), Input 3&4 (middle)
7. Side by Side: Press to select Input 1 and Input 2 split screen portrait mode
8. Side by Side: Press to select Input 3 and Input 4 split screen portrait mode
9. Full Screen (1-4): Press to select an input source to display full screen

10. 1x3: Press to select Input 1 large and Input 2, 3, 4 small screen
11. 1x3: Press to select Input 2 large and Input 1, 3, 4 small screen
12. 1x3: Press to select Input 3 large and Input 1, 2, 4 small screen
13. 1x3: Press to select Input 4 large and Input 1, 2, 3 small screen
14. RES: Switch between 720P/1080P resolution

## Specifications

|                     |  |
|---------------------|--|
| HDMI Interface      | 4 HDMI Inputs, 1 HDMI Output   |
| HDCP Version        | HDCP 1.2   |
| Audio               | PCM  |
| Video Modes         | Full screen, Dual, Quad  |
| Resolution          | 480i@60Hz, 480p@60Hz, 576i@50Hz,<br>576p@50Hz, 720p@50/60Hz,<br>1080i@50/60Hz, 1080p@50/60Hz |
| Working Temperature | 32-104 F (0-40 C)  |
| Storage Temperature | -4-140 F (-20-60 C)  |
| Power Supply        | DC 12V / 2A  |
| Power Consumption   | 10W (max)  |
| Size                | 7.03"x4.12"x0.83" (178.5x104.7x21.2 mm)  |
| Weight              | 0.75 lbs (340g)  |

**Blank Page**

**Blank Page**

## **Disclaimer**

The product name and brand name may be registered trademarks of related manufacturers. TM and ® may be omitted on the user's guide. The pictures on the user's guide are just for reference, and there may be some slight differences with the actual products.

We reserve the right to make changes without prior notice to a product or system described herein to improve reliability, function, or design.



*Thank you for choosing gofanco*

*[www.gofanco.com](http://www.gofanco.com)*