

**gofanco<sup>®</sup>**

## PRO-HD21Split2P

1x2 4K 120Hz HDMI Splitter with Bulit-in & User Adjustable  
EDID Management and Audio Extractor

### User's Guide



Congratulations for owning a gofanco product. Our products aim to meet all your connectivity needs wherever you go.

Have fun with our products!

Please read this manual carefully before first use.

If you need more information about our products, please visit  
[www.gofanco.com](http://www.gofanco.com).

For technical support, please email us at  
[support@gofanco.com](mailto:support@gofanco.com).

For drivers/manuals download, please go to  
<http://www.gofanco.com/download>.

---

## 1. Introduction

gofanco Prophecy PRO-HD21Split2P is a cost-effective and state-of-the-art 4K @120Hz HDMI splitter solution in the market today, transmitting high-definition video and high-quality audio from one source to 2 different locations without losing quality. The PRO-HD21Split2P also supports HDR and the true 4K120 video! In addition, this device supports separation of high-quality digital S/PDIF (Toslink) audio & stereo analog audio from the incoming HDMI signal.

With built-in USB firmware update mechanism, compatibility among countless HDMI sources and receivers are further guaranteed. With support for 4K @120Hz resolution and high-definition audio, the PRO-HD21Split2P is suitable for high-quality HDMI broadcasting, e-sports, digital signage and education applications!

## 2. Features

- Supports up to 4K @120Hz YUV 4:4:4/4:2:2/4:2:0★
- Supports HDR★★ at 4K @60Hz YUV 4:2:0 10bits/12bits★★★
- Supports VRR (Variable Refresh Rate) & ALLM (Auto Low Latency Mode)
- Supports CEC pass-through on input & output 2
- HDCP 2.3 and 1.4 compliant
- Wide frequency range: 25MHz~1188MHz
- Video bandwidth: 40G

- Supports audio extraction to Toslink & Stereo
- Supports 4K to 1080p resolution downscaling\*\*\*
- Supports pre-configured EDIDs and EDID learning
- Supports xvYCC, x.v.Color & Deep Color
- Firmware upgradable via Micro-USB for expanded compatibility
- Supports Dolby Digital, DTS-HD and Dolby TrueHD audio

✧ Future 8K upgradable.

\*\* HDR = High Dynamic Range.

\*\*\* Video bandwidth of 4K @60Hz YUV 4:2:0 10bits (HDR) is 384MHz, and 4K @60Hz YUV 4:4:4 8bits is 594MHz.



If the output does not produce video, press and hold the “reset” button for about 2 seconds to reset the device

### 3. Package Contents

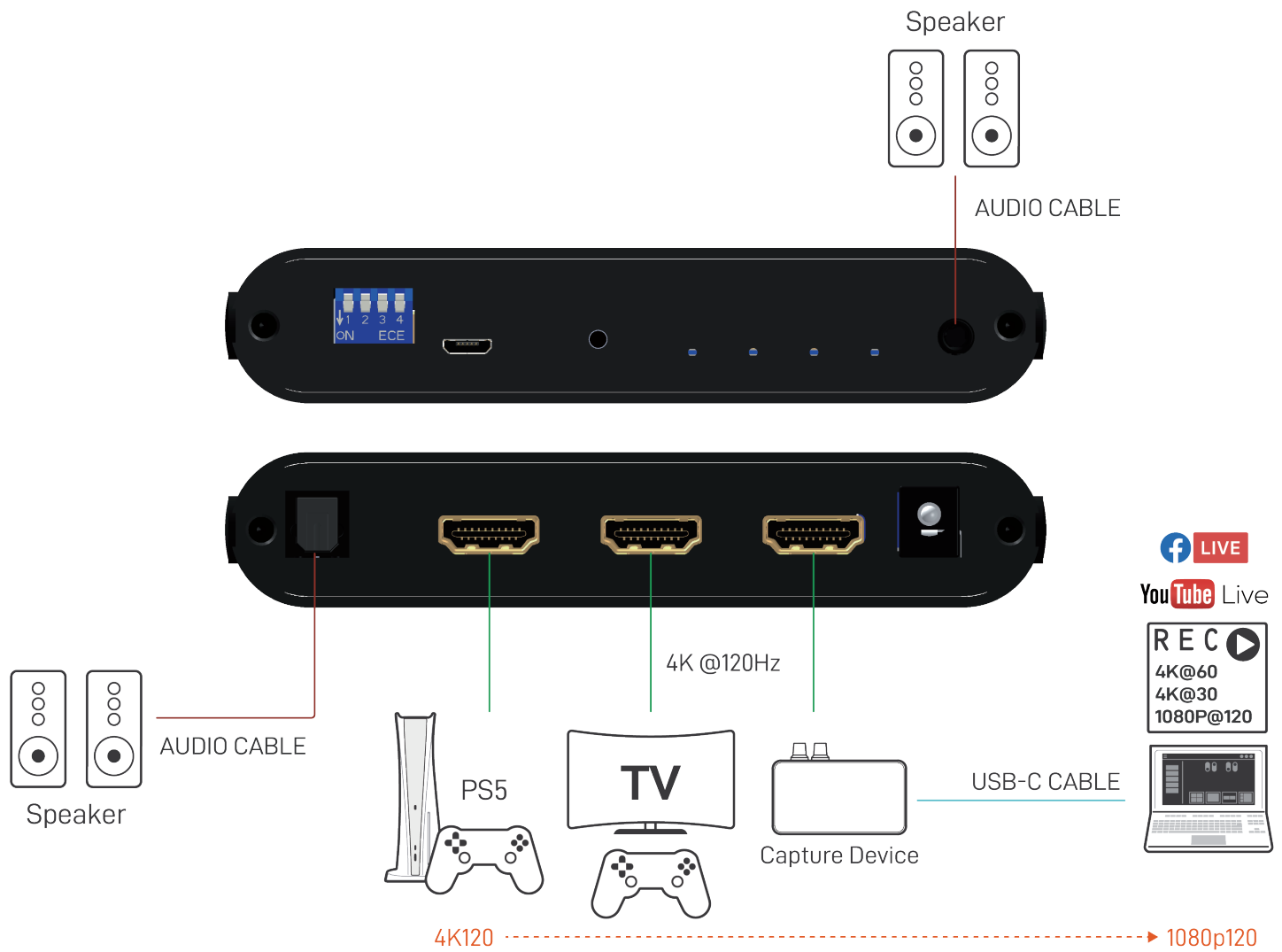
- 1x PRO-HD21Split2P
- 1x DC 5V power adapter
- 1x User Manual

## 4. Specifications

Item	Description
Role of usage	1x2 Distribution Amplifier (Splitter)
HDCP compliance	HDCP 2.3 / 1.4
Video bandwidth	Up to FRL 5 (40G)
Video support	Up to 4K2K 120Hz 4:4:4/4:2:2/4:2:0
Audio support	DTS-HD Master Audio, Dolby TrueHD Dolby Digital, DTS, LPCM
ESD protection	Human body model — $\pm 15\text{kV}$ [air-gap discharge] & $\pm 8\text{kV}$ [contact discharge]
Firmware update	Via Micro-USB port
Input	1x HDMI
Output	2x HDMI + 1x TOSLINK + 1x 3.5mm phone jack
HDMI connector	Type A [19-pin female]
Dip switch	EDID Mode selection

Mechanical		
Housing		Metal enclosure
Dimensions [L x D x H]	Model	120 x 63 x 23mm [4.7" x 2.5" x 0.9" ]
	Package	198 x 137 x 74mm [7.8" x 5.4" x 2.9"]
	Carton	420 x 400 x 300mm [1'4"x 1'3" x 11.8"]
Weight	Model	194g [6.8 oz]
	Package	350g [12.3 oz]
Power supply		5V DC
Power consumption		3 Watts [max]
Operation temperature		0~40°C [32~104°F]
Storage temperature		-20~60°C [-4~140°F]
Relative humidity		20~90% RH [no condensation]

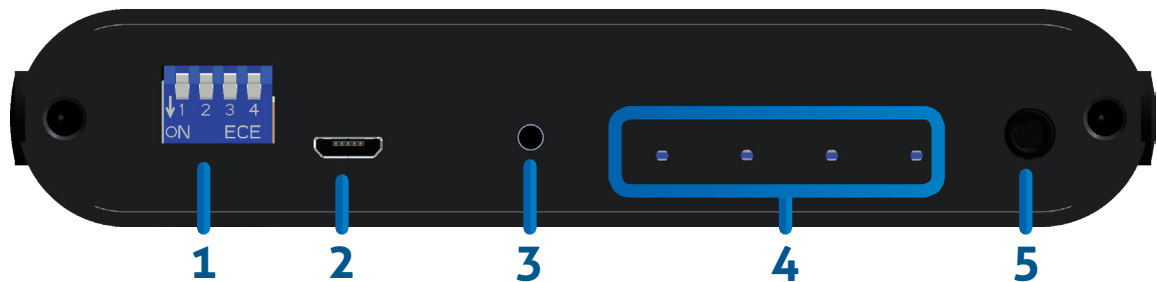
## 5. Connection Diagram



Supports 4K to 1080p downscaling, allowing 4K @120Hz playback while capturing in 1080p @120Hz

## 6. Panel Description

### Front Panel



- 1. EDID MODE:** See more details in the DIP SWITCH SETTING section
- 2. Micro-USB Port:** Firmware update / Software control
- 3. Push Button:** Reset the device
- 4. LED Indicators:** Input FRL format, Input signal, Output 1 signal, Output 2 signal (from left to right)
- 5. Stereo (3.5mm) Out**

### Rear Panel



- 6. S/PDIF (Toslink) Out**
- 7. HDMI IN:** Connect to an HDMI input source
- 8. HDMI OUTPUTS 1-2:** HDMI outputs to HDMI displays
- 9. +5V DC:** Connect to 5V DC power supply unit

## 7. Dip Switch Setting

On [↓] Off [↑]

DIP Switch Position				Description
Pin 1	Pin 2	Pin 3	Pin 4	
↑	↑	-	-	4K Ultra HD(4K@120 4:4:4 (32G)) 8ch PCM audio
↑	↓	-	-	4K Ultra HD(4K@120 4:2:0 (24G)) 2ch audio
↓	↑	-	-	EDID learning from output 1
↓	↓	-	-	User defined EDID
-	-	↓	-	Enable scale up on output 1*
-	-	↑	-	Normal(Bypass)
-	-	-	↓	Enable scale down on output 2*
-	-	-	↑	Normal(Bypass)

1. EDID learning mode will mask display DSC information.
2. For a complete EDID learning, including the display DSC information, use "User defined EDID" mode to learn EDID from the display.

### \*Notes:

Supported Resolution
<b>Scale up</b>
1080P to 4K2K
2560x1080 to 5K2K
<b>Scale down</b>
4K2K to 1080P
5K2K to 2560x1080



## 8. Installation

### **Broadcasts HDMI signal to 2 HDMI displays!**

- Switch off all devices, including the monitors.
- Connect to the displays.
- Connect an HDMI source (such as a Blu-ray Disc player) to the HDMI In.
- Plug in 5V DC power supply.
- Power on the HDMI monitors.
- Power on the HDMI source.

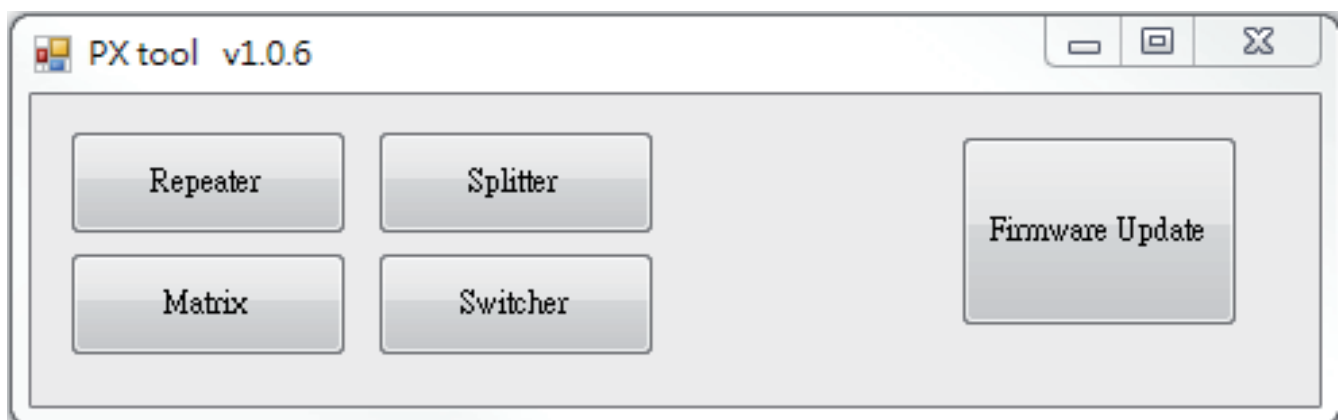
## 9. Software Operation

The included software features the following functions in Splitter mode: 1) Main: View input/output information; 2) EDID: Load user-defined EDID & read/download EDID; 3) System: Firmware version/update & FRL (Fixed Rate Link) output

This Windows PC software can be downloaded from our website. Please visit [www.gofanco.com/download](http://www.gofanco.com/download), search for this product by its part# **PRO-HD21Split2P**, and download the software and save it to your system.

To use the software, connect our device to a Windows PC with a USB cable (Micro-USB to Type-A USB, not included in the package).

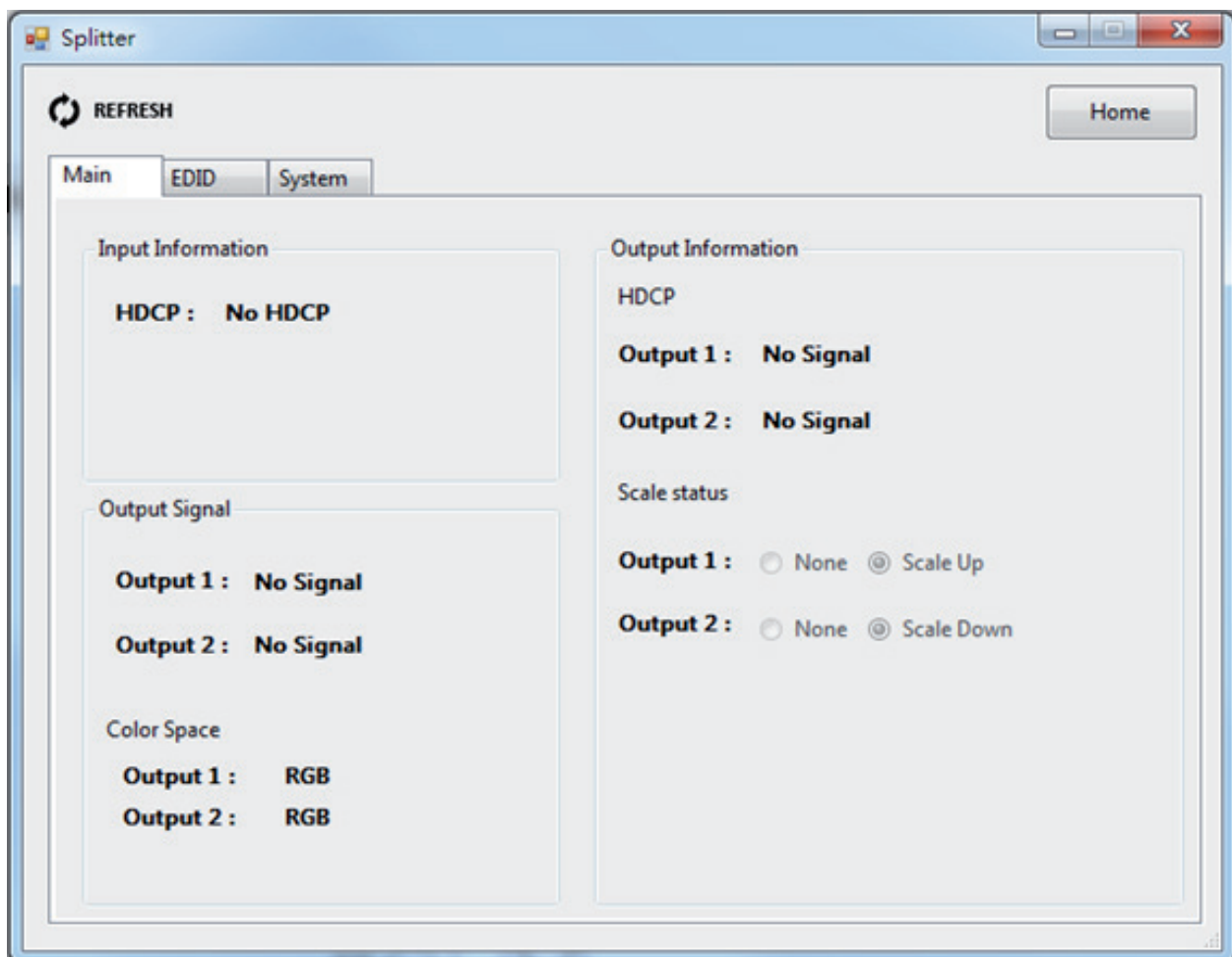
The following window will pop up when the software is launched. Click **Splitter** button to enter the Splitter Control Interface.



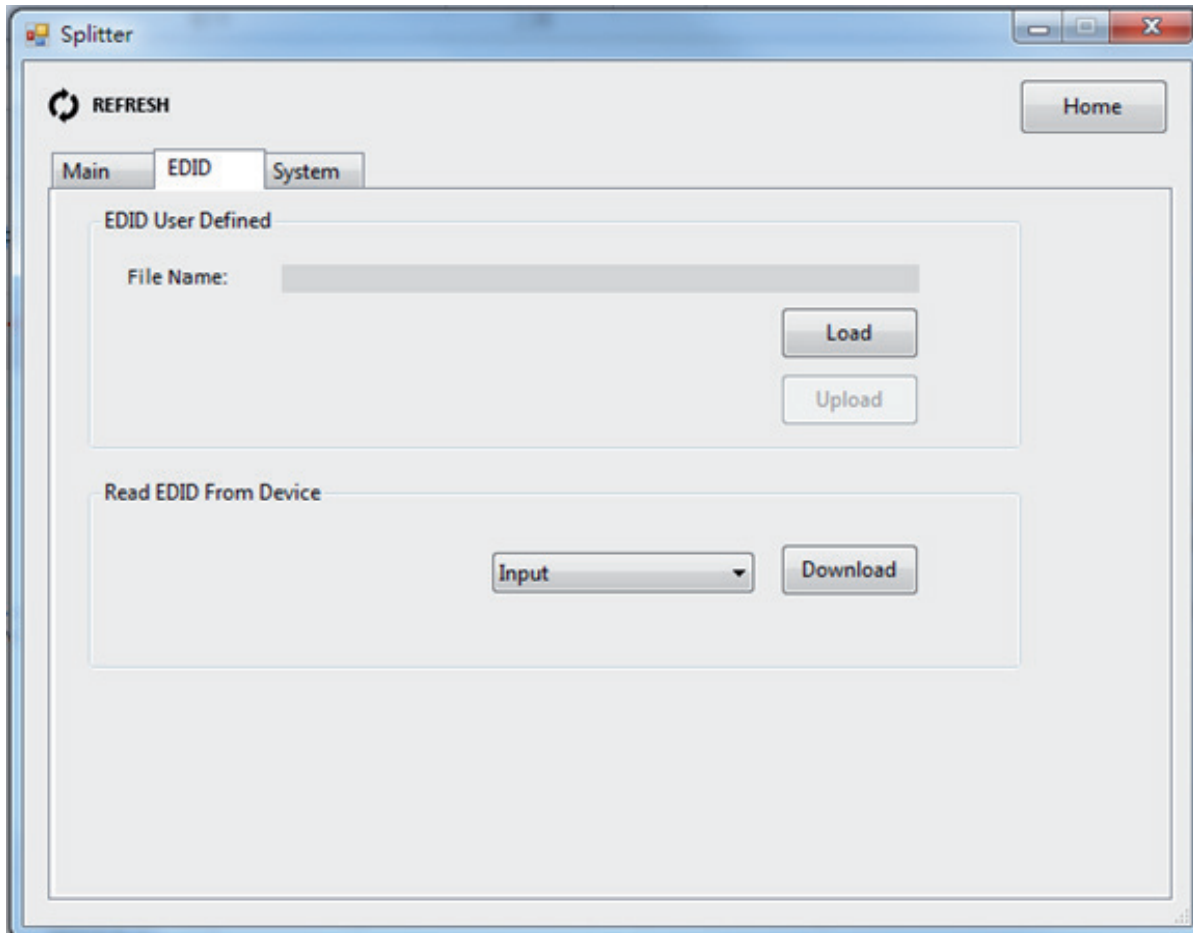
## 1. Splitter Control Interface

- **Main Tab**

In this section, the software will show the input/output information.



- **EDID Tab**



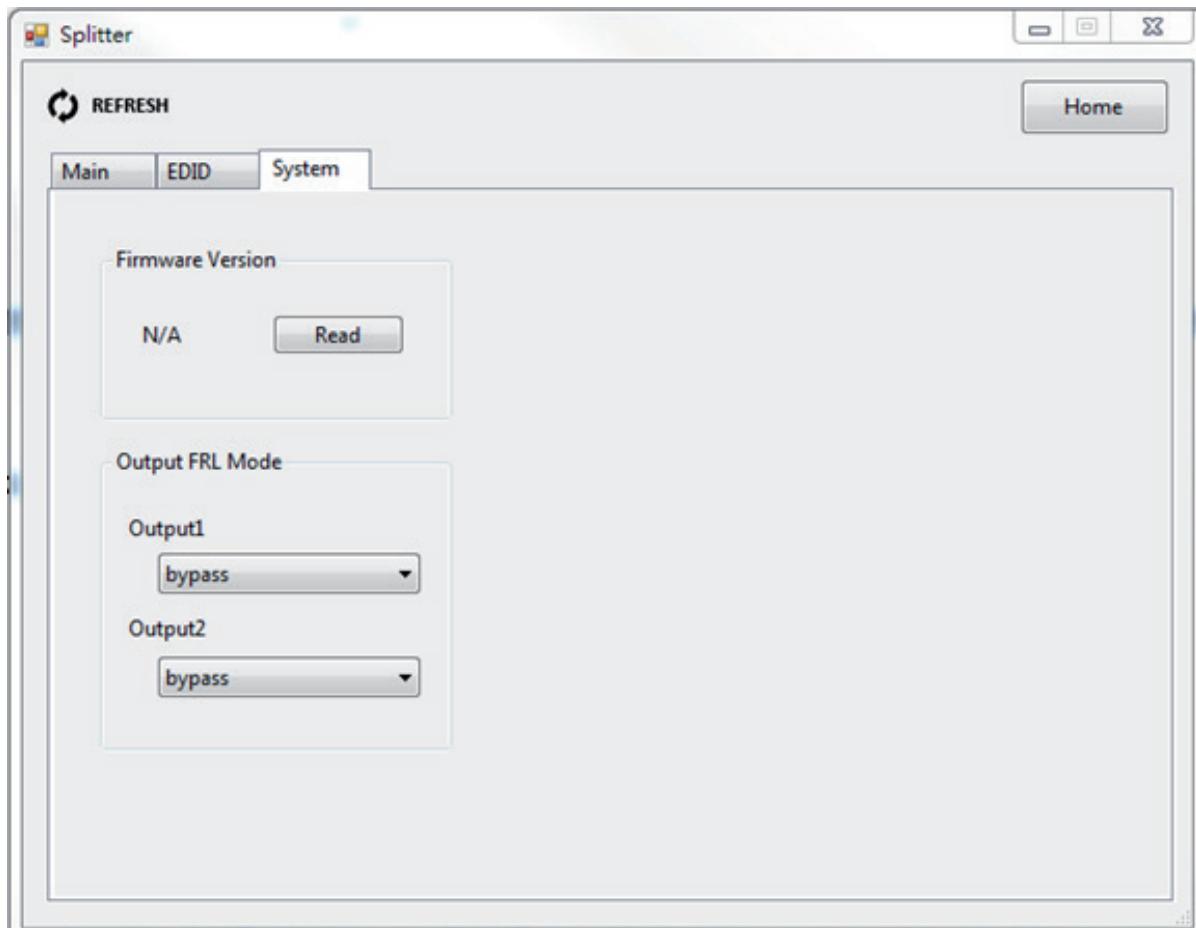
### 1.) User-defined EDID

- Set the dip switches to [Pin 1/2/3/4] to [↑-↑-↑-↑]
- Click **Load** button to select the user-defined EDID file from the PC
- Click **Upload** button to load the user-defined EDID file
- Set the dip switch to [Pin 1/2] to [↓-↓] to apply the user-defined EDID. [Pin 3/4] can be set to any position.

### 2.) Read EDID From Device

- Select Input , Sink 1 or Sink 2
- Click **Download** button to save the EDID file to your PC

- **System Tab**



### 1.) Firmware Version

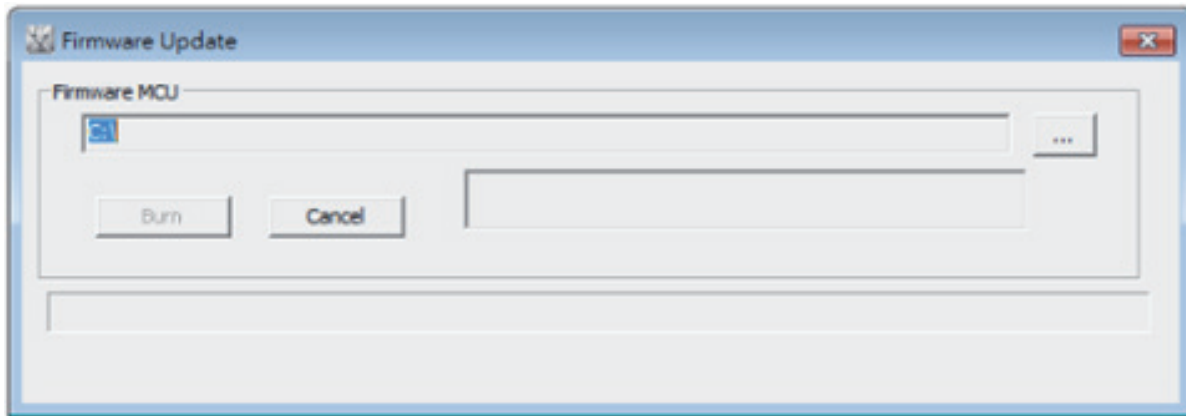
Click **Read** button to display the device's current firmware version

### 2.) Output FRL Mode

Select bypass, 3Lanes/3G, 3Lanes/6G, 4Lanes/6G, 4Lanes/8G, 4Lanes/10G or 4Lanes/12G on output 1 & output 2

## 2. Firmware Update

From the main screen, click **Firmware Update** button to enter the FW update interface.



- Click the ... button to select the file which you want to write into the device.
- Click the **Burn** button and a message "Please power cycle ..." will display.
- Unplug the Micro-USB cable and power supply from the splitter.
- Now, plug in the Micro-USB cable back into the splitter's Micro-USB port, then the power supply to the splitter's power jack. The firmware will start to update.
- After a successful firmware update, a "Firmware Update Success" message will display.

## 10. Limited Warranty

The SELLER warrants the PRO-HD21Split2P 1x2 HDMI 2.1 4K120 Splitter with Built-in & User Adjustable EDID Management and Audio Extractor free from defects in the material and workmanship for 1 year from the date of purchase from the SELLER or an authorized dealer. Should this product fail to be in good working order within 1 year warranty period, The SELLER, at its option, repair or replace the unit, provided that the unit has not been subjected to accident, disaster, abuse or any unauthorized modifications including static discharge and power surge. This warranty is offered by the SELLER for its BUYER with direct transaction only. This warranty is void if the warranty seal on the metal housing is broken.

Unit that fails under conditions other than those covered will be repaired at the current price of parts and labor in effect at the time of repair. Such repairs are warranted for 90 days from the day of reshipment to the BUYER. If the unit is delivered by mail, customers agree to insure the unit or assume the risk of loss or damage in transit. Under no circumstances will a unit be accepted without a return authorization number.

The warranty is in lieu of all other warranties expressed or implied, including without limitations, any other implied warranty or fitness or merchantability for any particular purpose, all of which are expressly disclaimed.

Proof of sale may be required in order to claim warranty. Customers outside Taiwan are responsible for shipping charges to and from the SELLER. Cables and power adapters are limited to a 30 day warranty and must be free from any markings, scratches, and neatly coiled.

The content of this manual has been carefully checked and is believed to be accurate. However, The SELLER assumes no responsibility for any inaccuracies that may be contained in this manual. The SELLER will NOT be liable for direct, indirect, incidental, special, or consequential damages resulting from any defect or omission in this manual, even if advised of the possibility of such damages. Also, the technical information contained herein regarding the PRO-HD21Split2P features and specifications is subject to change without further notice.

### Disclaimer

The product name and brand name may be registered trademarks of related manufacturers. TM and ® may be omitted on the user's guide. The pictures on the user's guide are just for reference, and there may be some slight differences with the actual products.

We reserve the rights to make changes without prior notice to a product or system described herein to improve reliability, function, or design.



*Thank you for choosing gofanco*