

gofanco®

PRO-3GSDI4P

1x4 3G/HD/SD-SDI Distribution Amplifier with Reclocking

User's Guide



Congratulations for owning a gofanco product. Our products aim to meet all your connectivity needs wherever you go.

Have fun with our products!

Please read this manual carefully before first use.

If you need more information about our products, please visit
www.gofanco.com.

For technical support, please email us at
support@gofanco.com.

For drivers/manuals download, please go to
<http://www.gofanco.com/download>.

1. Introduction

The PRO-3GSDI4P receives one SDI input, perfectly duplicates it, and re-transmits four SDI outputs for real time multi-viewing. It is a reliable video device splitting a SDI, HD-SDI, or 3G-SDI video source to four SDI compliant displays at the same time. Besides, built-in re-clocking & equalization features provide the best performance for SDI distribution amplifier.

2. Features

- 3G/HD/SD triple-rate distribution
- Four separately buffered and reclocked outputs
- Cable equalization (Beldon 1694A) and signal retiming
- Dual color LED indication of input lock and rate
- Passes all ancillary data
- Provides automatic input cable equalization up to 300m (1000ft)@SD, 150m (500ft)@HD and 60m(190ft)
- Reclocks SDI signals for cascading and thus longer transmission
- Inter-locked power supply for better fixedness

3. Package Contents

- 1x PRO-3GSDI4P
- 1x 5V power adapter
- 1x User Manual

4. Specifications

| Model Name | PRO-3GSDI4P |
|----------------------------------|---|
| Technical | |
| SDI standards | SD/HD/3G-SDI |
| Auto 3G/HD/SD detection | Yes |
| Supported protocols | SMPTE 259M, SMPTE 292M, SMPTE 424M, SMPTE425M |
| Video bandwidth | [2.97Gpbs & 2.97/1.001Gbps] |
| Data rates | 270 / 1483 / 1485 / 2970 Mbps |
| Output impedance | 75Ω |
| Reclocking function | Yes |
| Cable equalization | [3G] up to 60m (190ft) / [HD] up to 150m (500ft) / [SD] up to 300m (1000ft) |
| Audio support | Yes |
| RP-198 pathological patterns | Immune |
| PCB stack-up | 4-layer board [impedance control — differential 100Ω; single 50Ω] |
| Input | 1x BNC [SDI] |
| Output | 4x BNC [SDI] |
| BNC connector | 75Ω inter-locked socket |
| Eye pattern characteristics [HD] | Amplitude: Within 800mV $\pm 3\%$ (<10%) Rise overshoot: Less than 2% (<10%) Fall overshoot: Less than 2% (<10%) Long time jitter: 0.195 UI (<1.0 UI) Timing jitter: 0.195 UI (<1.0 UI) Alignment jitter: 0.127 UI (<0.2 UI) |

Mechanical

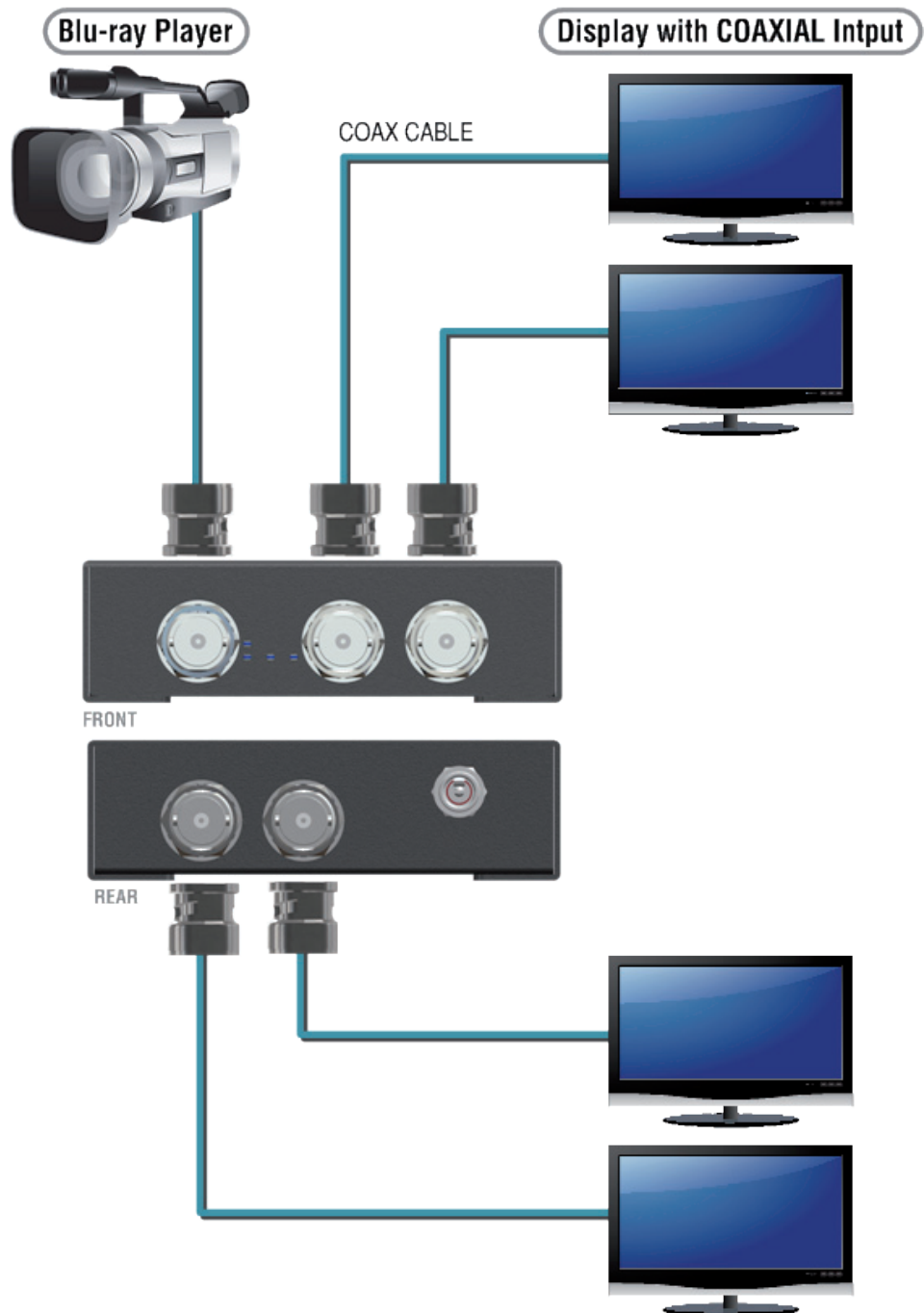
| | | |
|---------------------------|---------|--|
| Housing | | Metal enclosure |
| Dimensions [L x D x H] | Model | 112 x 42 x 25mm [4.4" x 1.6" x 0.9"] |
| | Package | 198 x 137x 74mm [7.8" x 5.39" x 2.91"] |
| | Carton | 420 x 400 x 300mm [16.53" x 15.75" x 11.81"] |
| Weight | Model | 174g [6.1 oz] |
| | Package | 427g [0.9 lbs] |
| Fixedness | | Inter-locked power supply |
| Power supply | | 5V 2A DC |
| Power consumption | | 10 Watts [max] |
| Operation temperature | | 0~40°C [32~104°F] |
| Storage temperature | | -20~60°C [-4~140°F] |
| Relative humidity | | 20~90% RH [no condensation] |



The measurement results are from Tektronix WFM-7120 with SDI through 1m (3.3ft) long Belden 1694A

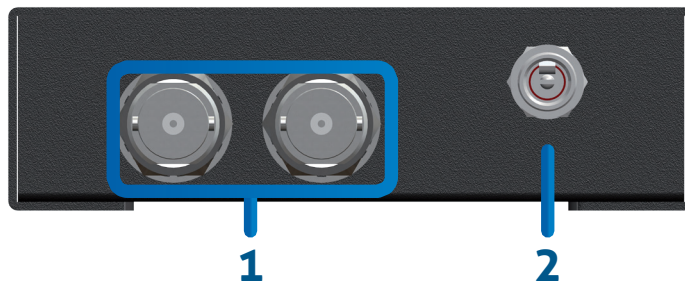
5. Connection Diagram

PRO-3GSDI4P



6. Panel Description

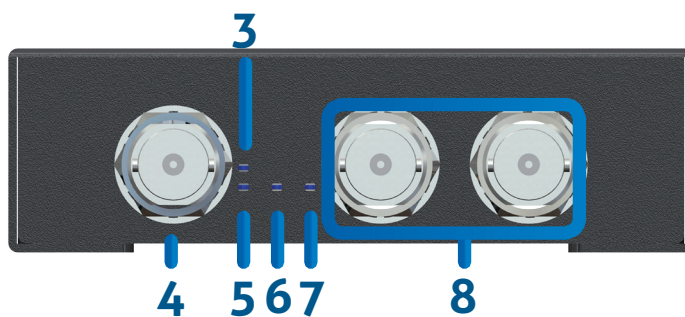
Front Panel



1. 3G/HD/SD-SDI Output

2. 5V DC power jack

Rear Panel



3. Power LED indicator

4. 3G/HD/SD-SDI Input

5. 3G Signal LED indicator

6. HD Signal LED indicator

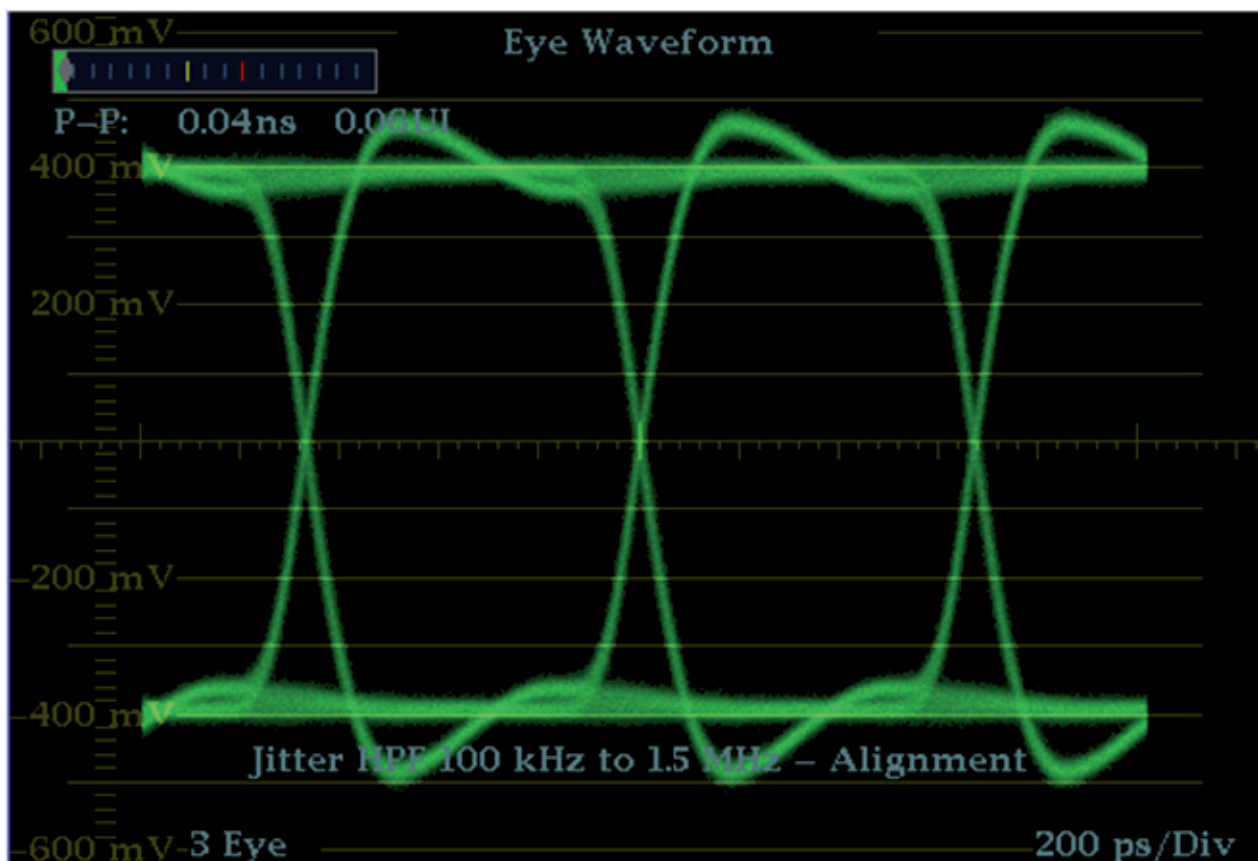
7. SD Signal LED indicator

8. 3G/HD/SD-SDI Output

7. Installation

- Connect a camera or other devices equipped with 3G/HD/SD-SDI outputs to PRO-3GSDI4P 3G/HD/SD-SDI input.
- Connect devices equipped with 3G/HD/SD-SDI inputs (e.g. monitors or video processors) to PRO-3GSDI4P 3G/HD/SD-SDI outputs.
- Plug power adapter cable into 5V DC power jack.

8. Signal Measurement



9. Warranty

The SELLER warrants the **PRO-3GSDI4P 1x4 3G/HD/SD-SDI Distribution Amplifier with Reclocking** to be free from defects in the material and workmanship for 1 year from the date of purchase from the SELLER or an authorized dealer. Should this product fail to be in good working order within 1 year warranty period, The SELLER, at its option, repair or replace the unit, provided that the unit has not been subjected to accident, disaster, abuse or any unauthorized modifications including static discharge and power surge. This warranty is offered by the SELLER for its BUYER with direct transaction only. This warranty is void if the warranty seal on the metal housing is broken.

Unit that fails under conditions other than those covered will be repaired at the current price of parts and labor in effect at the time of repair. Such repairs are warranted for 90 days from the day of reshipment to the BUYER. If the unit is delivered by mail, customers agree to insure the unit or assume the risk of loss or damage in transit. Under no circumstances will a unit be accepted without a return authorization number.

The warranty is in lieu of all other warranties expressed or implied, including without limitations, any other implied warranty or fitness or merchantability for any particular purpose, all of which are expressly disclaimed.

Proof of sale may be required in order to claim warranty. Customers outside Taiwan are responsible for shipping charges to and from the SELLER. Cables are limited to a 30 day warranty and cable must be free from any markings, scratches, and neatly coiled.

The content of this manual has been carefully checked and is believed to be accurate. However, The SELLER assumes no responsibility for any inaccuracies that may be contained in this manual. The SELLER will NOT be liable for direct, indirect, incidental, special, or consequential damages resulting from any defect or omission in this manual, even if advised of the possibility of such damages. **Also, the technical information contained herein regarding the PRO-3GSDI4P features and specifications is subject to change without further notice.**

Disclaimer

The product name and brand name may be registered trademarks of related manufacturers. TM and ® may be omitted on the user's guide. The pictures on the user's guide are just for reference, and there may be some slight differences with the actual products.

We reserve the rights to make changes without prior notice to a product or system described herein to improve reliability, function, or design.



Thank you for choosing gofanco